



GAT MONTHLY MEMBERSHIP PROGRESS REPORT

Results as of: 6/30/2023

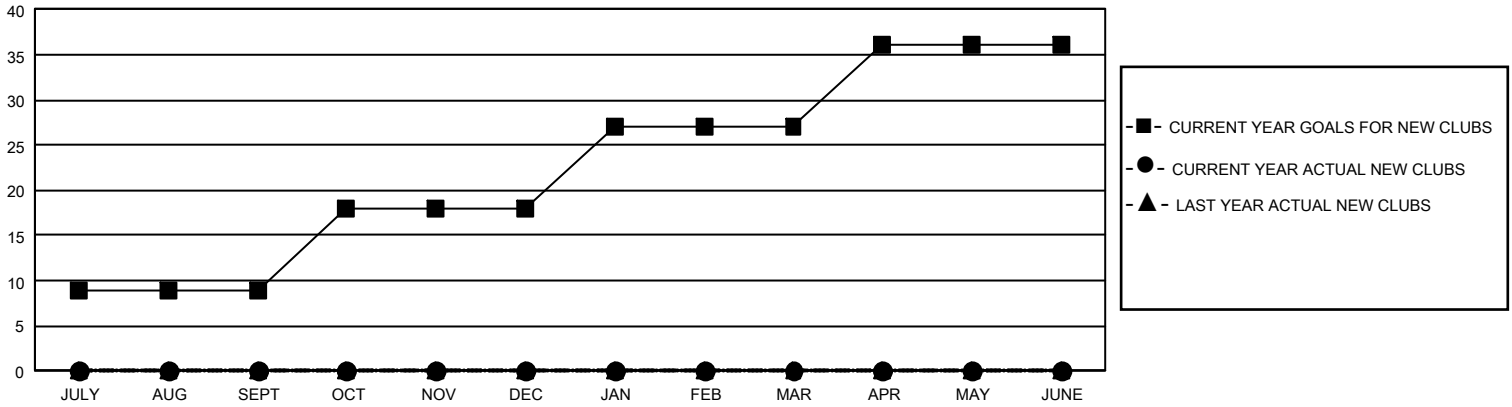
GMT Constitutional Area 5 - C, Group C

REPORT DOES NOT INCLUDE CLUBS IN UNDISTRICTED AREAS.

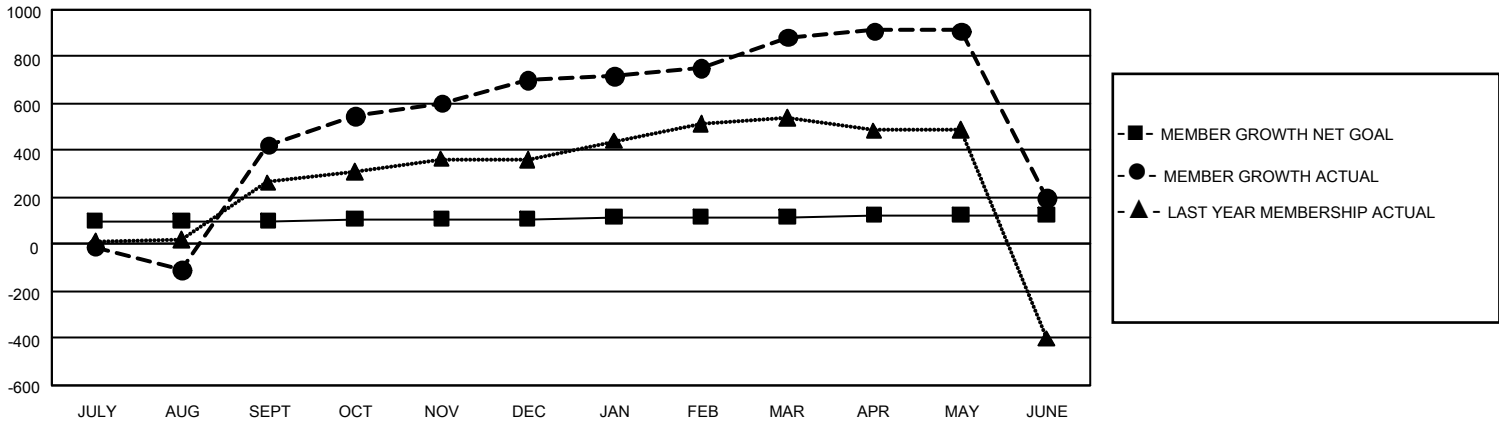
Clubs			
RESULTS FOR 2022-2023			
QUARTER	NEW CLUB GOAL	NEW CLUBS	DROPPED CLUBS
JULY/AUG/SEPT	27	0	8
OCT/NOV/DEC	27	0	0
JAN/FEB/MAR	27	0	0
APR/MAY/JUNE	27	0	4

Members			
RESULTS FOR 2022-2023			
QUARTER	MEMBER GROWTH NET GOAL	MEMBER GROWTH ACTUAL	DROPPED MEMBERS ACTUAL (including transfers)
JULY/AUG/SEPT	99	629	155
OCT/NOV/DEC	9	445	50
JAN/FEB/MAR	9	245	36
APR/MAY/JUNE	9	132	784

GOALS AND ACTUAL NEW CLUBS CUMULATIVE



GOALS AND ACTUAL MEMBERS CUMULATIVE



DROPPED CLUBS: 12	156 CLUBS OF 177 ADDED 1 OR MORE NEW MEMBERS	GENDER DISTRIBUTION	
		MALE 1,955 (55.48%) FEMALE 1,569 (44.52%) NON BINARY 0 (0.00%) PREFER NOT TO ANSWER 0 (0.00%)	
DROPPED MEMBERS		CLICK HERE FOR CUMULATIVE MEMBERSHIP DATA	TOTAL FAMILY UNIT MEMBERS 338
DECEASED 1 CLUB CANCELLED 146 OTHER 879 TOTAL 1,026			FAMILY MEMBERS PAYING HALF DUES 174